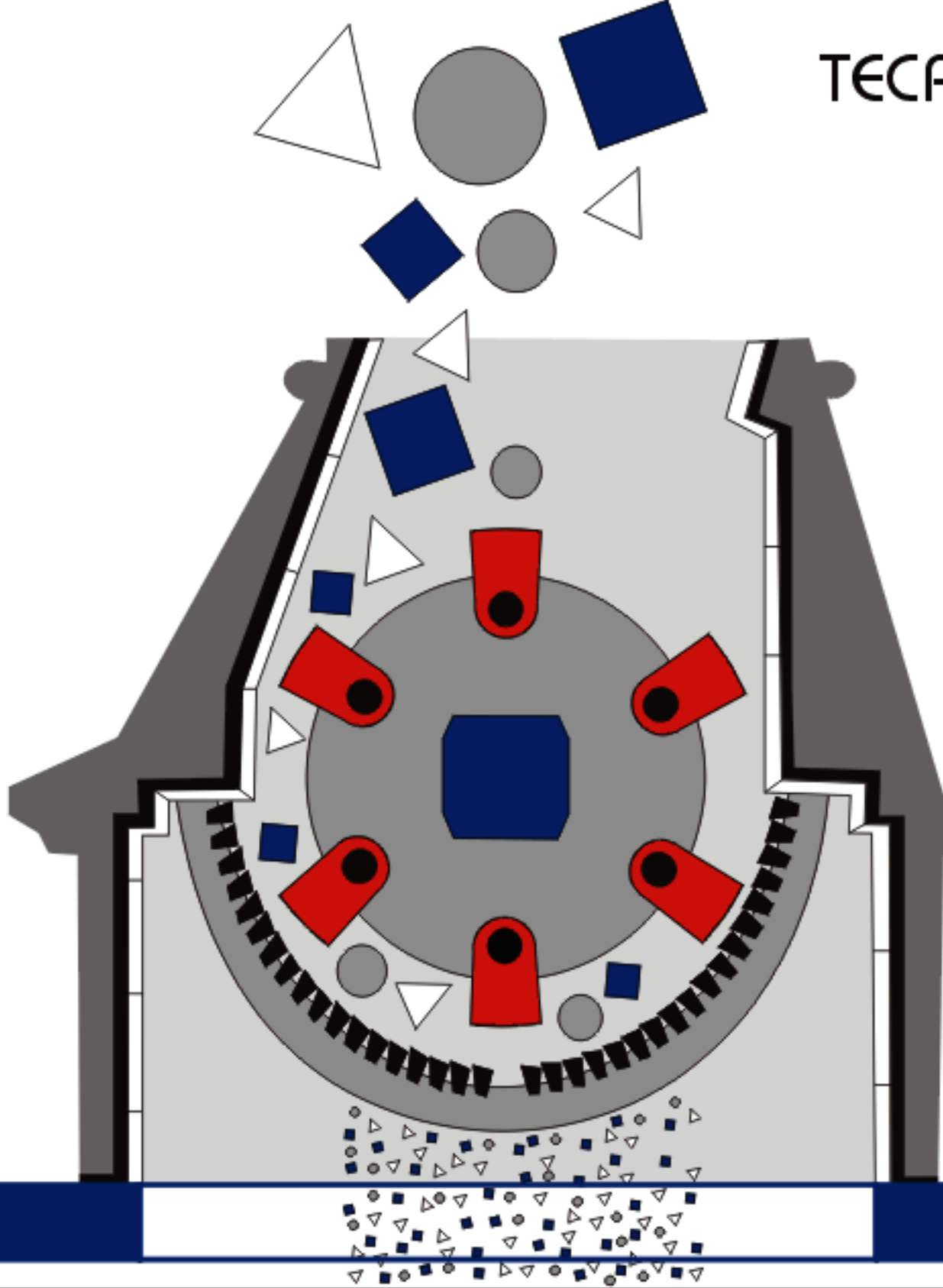


TECPRO



**IMPACT
HAMMER
CRUSHERS**

PRODUCT DIVISION, TECPRO SYSTEMS (P) LTD.

Under License From



Förderanlagen Magdeburg
GERMANY



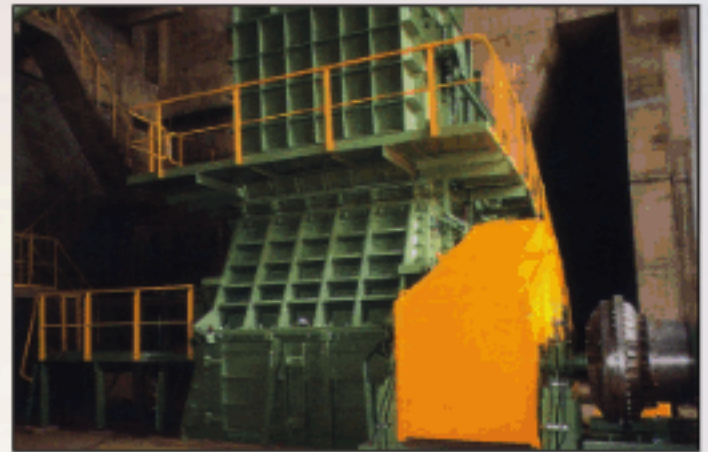
Crushing of soft to moderately hard raw materials...

Function

- TECPRO FAM Impact Hammer Crushers crush the feed by the reciprocal effect of shock and impact
- rotating hammers pick up the material and fling it against the armoured baffle wall or the anvil
- limitation of the final grain size by the gap width of the grating
- ratio of sizes before and after crushing up to 50:1 depending on the circumferential speed of the rotor

Pros

- rugged structural shape
- high throughput
- high degree of crushing
- low wear
- easy maintenance



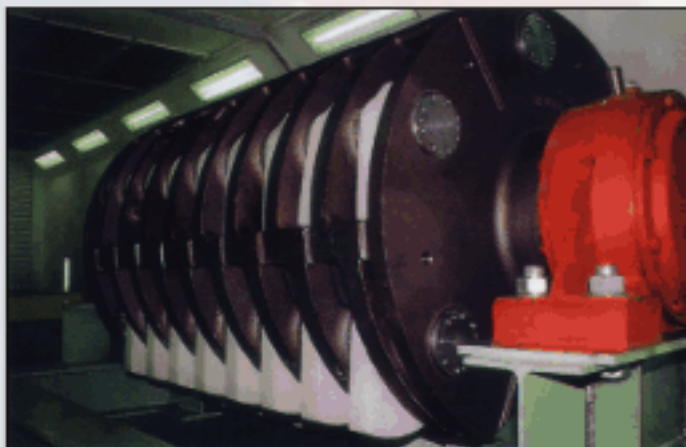
Design

- welded casing upper part hydraulically swivelling doors over the total width of the casing
- screwed lining with high-carbon steel plates
- two-part grizzly basket in lower part grizzly basket sections exchangeable and replaceable
- trapezoidal grizzly bars; upper grizzly basket segments replaceable
- rotor with staggered pockets in disk-shaped design
- dust proof self-aligning roller bearings of the rotor shaft
- hammers made of highly wear-resistant cast steel staggered between the rotor disks
- hammer axes secured against twisting and axial displacement
- drive by means of heavy-duty narrow V-belt and electric motor



Applications

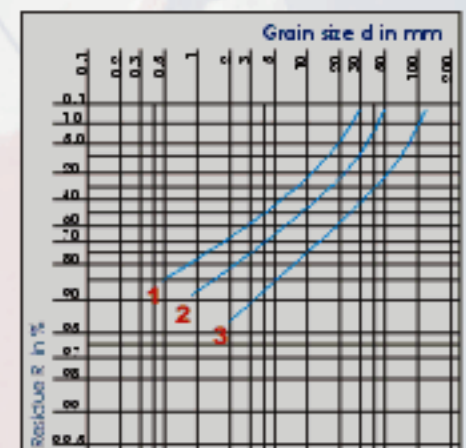
- limestone and cement plants
- coal, ore and potash mining
- gypsum industry
- moisture content of up to 15% with single-rotor impact hammer crusher
- moisture content of up to 30% with double-rotor hammer crusher

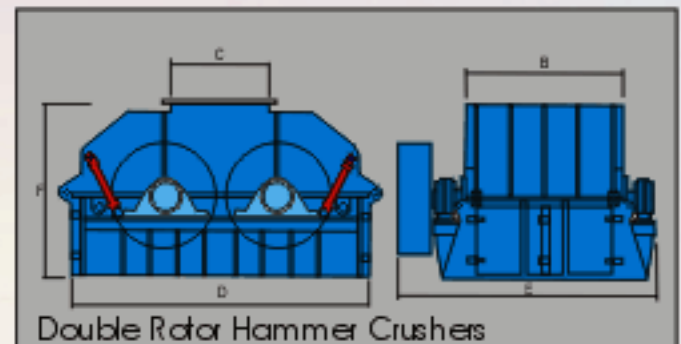
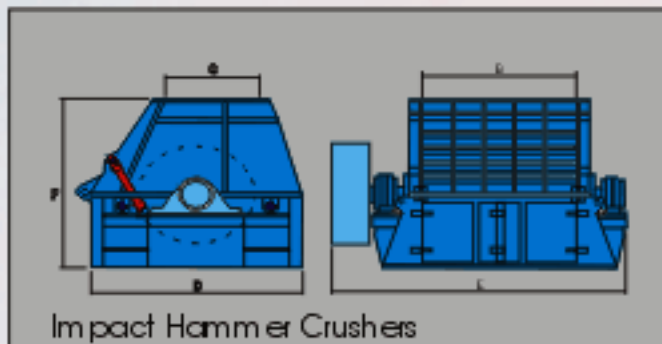


Material:
Moderately
hard limestone

Final grain sizes
with gap widths
of grating

- 25 mm
- 80 mm
- 150 mm





Designation Type	Diameter of rotor A mm	Width of rotor B mm	Weight without drive approx. kg	Throughput grizzly gap 25 mm t/h	Mean power Consumption kW	Installation dimensions			
						C mm	D mm	E mm	F mm
TS PHB 12 12 FX	1200	1200	18,200	120	132	950	2300	2700	2200
TS PHB 12 16 FX	1200	1600	24,400	160	160	950	2300	3200	2200
TS PHB 16 16 FX	1600	1600	38,300	300	380	1150	2900	3200	3000
TS PHB 16 18 FX	1600	1800	42,500	350	450	1150	2900	3400	3000
TS PHB 16 20 FX	1600	2000	44,100	420	550	1150	2900	3650	3000
TS PHB 20 20 / 6 FX	2000	2000	69,200	600	740	1500	3700	4600	3600
TS PHB 20 22 / 6 FX	2000	2200	73,200	700	840	1500	3700	4800	3600
TS PHB 20 25 / 6 FX	2000	2500	79,800	800	980	1500	3700	5100	3600
TS PHB 25 20 / 6 FX	2500	2000	102,900	720	860	1800	4500	4600	4400
TS PHB 25 25 / 6 FX	2500	2500	117,800	930	1200	1800	4500	5100	4400
TS PHB 25 28 / 6 FX	2500	2800	124,500	1000	1300	1800	4500	5400	4400
TS PHB 30 25 / 8 FX	3000	2500	171,000	1300	1580	2100	5400	6600	5300
TS PHB 30 30 / 8 FX	3000	3000	205,000	1550	1950	2100	5400	7100	5300

Designation Type	Diameter of rotor A mm	Width of rotor B mm	Weight without drive approx. kg	Throughput grizzly gap 25 mm t/h	Mean power Consumption kw	Installation dimensions			
						C mm	D mm	E mm	F mm
TS DRHB 12 12 FX	1200	1200	27,500	220	132	1050	3300	2800	1900
TS DRHB 12 16 FX	1200	1600	32,800	290	160	1050	3300	3250	1900
TS DRHB 16 16 FX	1600	1600	55,500	370	250	1550	4350	3600	2650
TS DRHB 16 18 FX	1600	1800	60,500	430	280	1550	4350	3900	2650
TS DRHB 16 20 FX	1600	2000	63,800	480	315	1550	4350	4200	2650
TS DRHB 20 20 / 6 FX	2000	2000	110,800	750	500	1900	5300	4400	3300
TS DRHB 20 22 / 6 FX	2000	2200	122,000	900	600	1900	5300	4700	3300
TS DRHB 20 25 / 6 FX	2000	2500	131,900	1000	680	1900	5300	5100	3300
TS DRHB 25 20 / 6 FX	2500	2000	204,500	1100	700	2300	6500	4950	3950
TS DRHB 25 25 / 6 FX	2500	2500	236,900	1450	920	2300	6500	5600	3950
TS DRHB 25 28 / 6 FX	2500	2800	239,500	1650	1050	2300	6500	6000	3950

The throughputs and the power consumption specified are related to dry, moderately hard limestone.

In case of other applications they have to be harmonized.

Further machines sizes upon request.

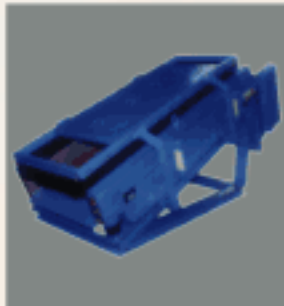
All dimensions and specifications in the catalogue are only approximate. We reserve the right of modification.

To enable our experienced engineering staff to recommend the installation best suited to specific applications, answers to as many of the following questions as possible will result in a prompt and accurate solution to your crushing requirements

- | | |
|-----------------------------------|--|
| 1. Material to be crushed | 7. Product sizes required |
| 2. Maximum feed dimension | 8. Friability |
| 3. Approximate feed size analysis | 9. Abrasive characteristics |
| 4. Moisture content | 10. Do you intend close circuit operation? |
| 5. Stickiness | 11. Capacity desired in tons per hour |
| 6. Bulk Density | |

OUR TECHNICAL COLLABORATORS:

1. Single Roll Crushers, Double Roll Crushers, (Smooth & Toothed), Reversible Impact Mill, Impact Hammer Crushers, Roller Screen, Ball Mills in technical collaboration with M/s. FAM Magdeburger Förderanlagen und Baumaschinen GmbH, Germany.
2. Aggregate Crushing and Screening plants - Cone Crushers, Vertical Shaft Impactors (Zenturbo), Jaw Crushers, in technical collaboration with M/s. Maschinenfabrik Liezen Und Giesserei Ges.m.b.H.
3. Flip-flow Screens in technical collaboration with M/s. Hein, Lehmann Trenn- Und Fordertechnik GmbH.
4. Vibrating Screens (Circular and linear motion), Vibrating Feeders, Apron Feeders in technical collaboration with M/s PEYTEC Aschauer & Peyfuss OEG, AUSTRIA.
5. Turnkey Projects - Fuel and Ash handling systems for Coal, Biomass, Bagasse based power plants, Material handling system for steel, cement, paper, industry etc.



Send your enquiries to :

TECPRO SYSTEMS (P) LIMITED

Product Division, Unit 2, First Floor, 25, Gandhinagar First Main Road, Adyar, Chennai 600 020. Ph : +91 44 42076559, 24426027, 24425886
 Fax : + 91 44 24425922 Email : tecprochn@vsnl.net

Kolkata

77 A, Raja Basanta Roy Road
 2nd Floor, Kolkata 700 029
 Ph : +91 33 2464 9150/9156
 Fax: +91 33 2464 7398
 Email: tecprocal@vsnl.net

New Delhi

114-115, Vishwadeep Towers, District Centre, Jangpore, New Delhi 110 058.
 Ph : +91 11 25540950 / 54 / 59
 Fax : +91 11 25540951
 e-mail : tecprodel@tecprosystems.com

Dubai

M/s. Avigo Fzco
 Suite 410, LOB 15,
 PO Box 18264, Jebel Ali, Dubai, UAE
 Ph : +971 4881 4681
 Fax : +971 4887 1297
 Email: atajeja@avigoCorp.com