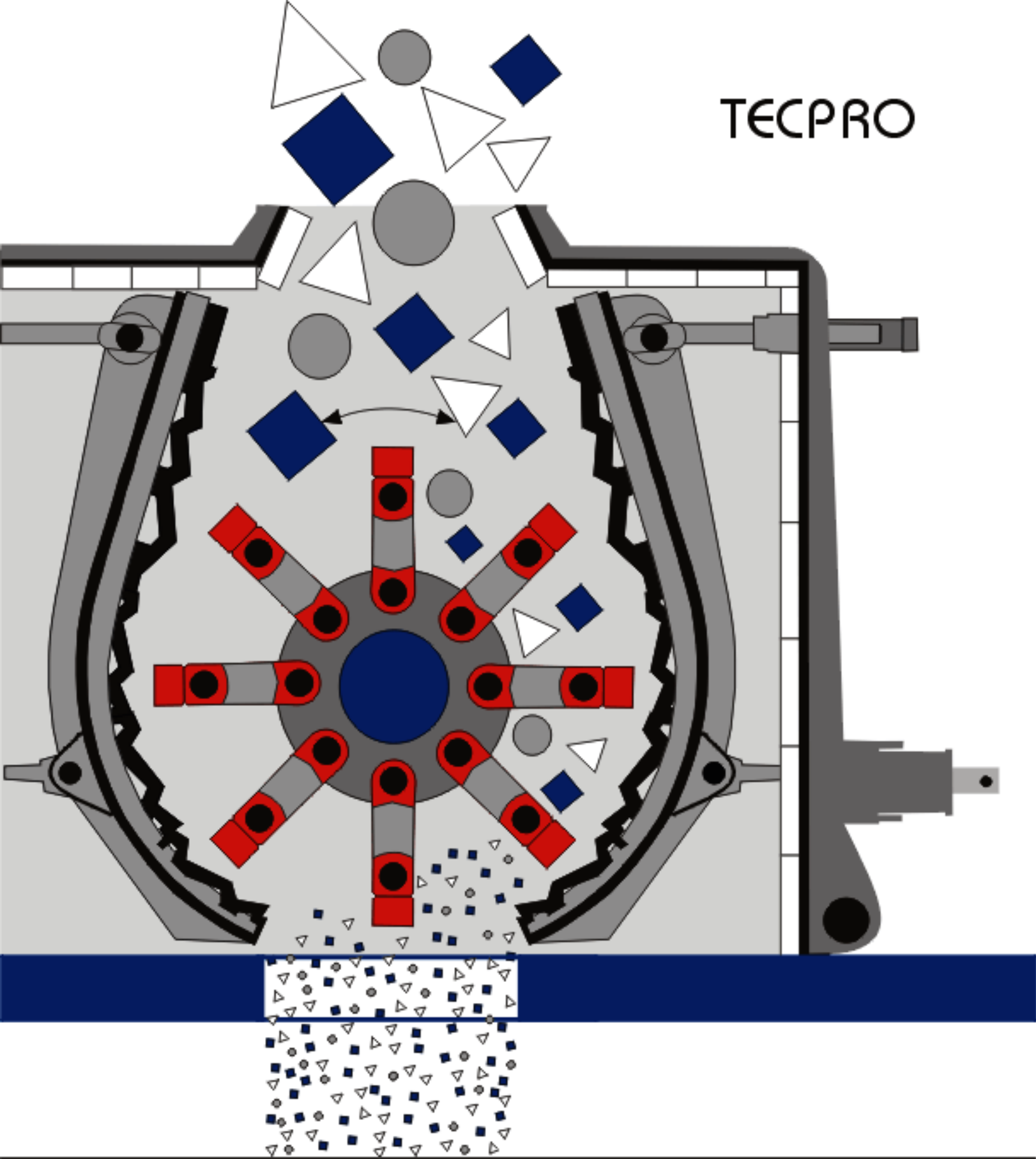


TECPRO



IMPACT HAMMER MILLS

PRODUCT DIVISION, TECPRO SYSTEMS (P) LTD.

Under License From

FAM

Förderanlagen Magdeburg
GERMANY

Function

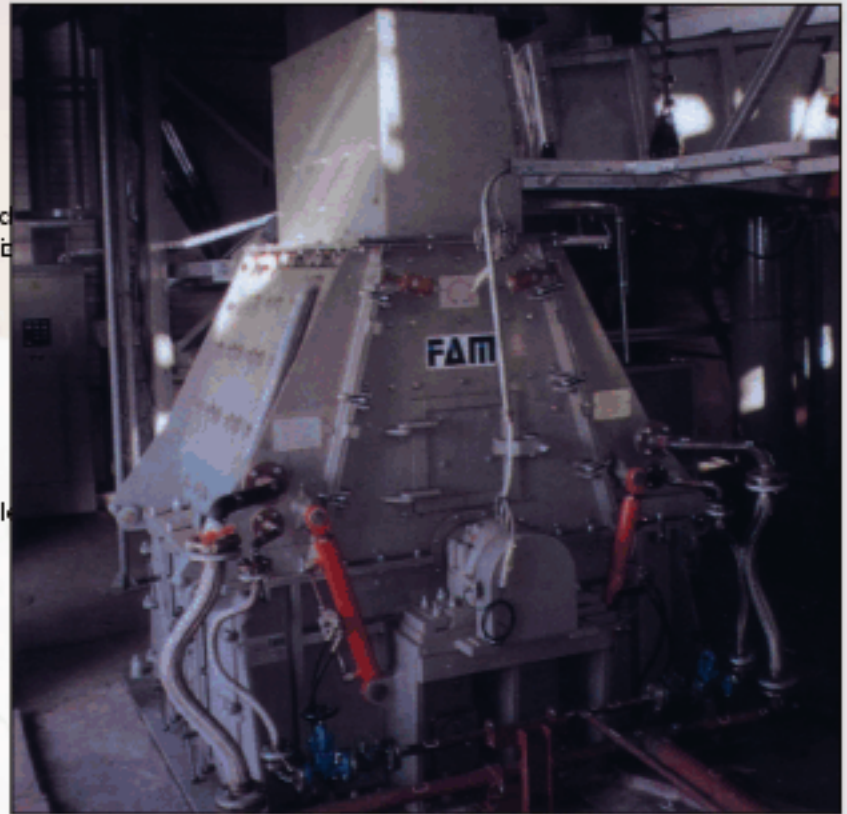
- TECPRO-FAM Impact Hammer mills crush the material by the reciprocal effect of impact and friction between the hammer heads and the hammer path.
- Rotor speed and the gap between hammer heads and the hammer path determine the final grain size.

Design

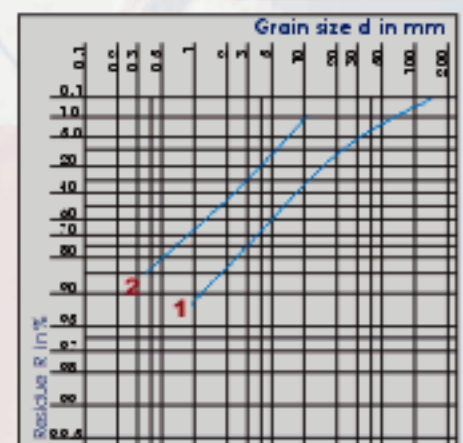
- Welded casing
- Side parts hydraulically swivelling
- Big inspection doors
- Screwed lining with high carbon steel plates
- Hammer path with wear resistant baffle plates which are mechanically or hydraulically adjustable at all pivot points
- Dust proof bearing of self-aligning rollers on the rotor shaft
- Rotor in disk type design
- Reversible or single direction design
- Hammer heads made of chrome alloy cast steel or composite casting
- Direct or V-belt Drive

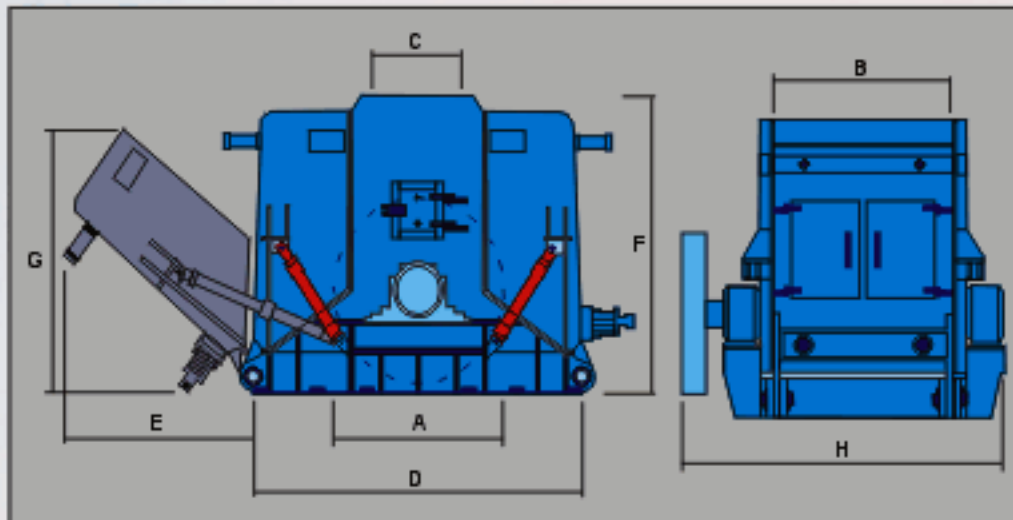
Applications

- Coal and potash industries
- Steel works
- Gypsum and limestone plants



Material :
Hard coal
1
Feed grain size
2
Final grain size





Pros

- Rugged structural shape
- Easy maintenance
- High throughput
- High degree of crushing
- Low wear
- Insensitive to foreign bodies

The throughputs specified refer to hard coal with 90% of the final product smaller than 3 mm.

Further machine sizes upon request.

All dimensions and specifications in the catalogue are only approximate. We reserve the right of modification.

Designation Type	Diameter of rotor A mm	Width of rotor B mm	Weight approx. kg	Throughput m ³ /h	Power consumption kW	Installation dimensions					
						C mm	D mm	E mm	F mm	G mm	H mm
TS PHM 0800	800	600	3500	15	30-75	350	1600	600	1200	1100	1350
TS PHM 0808	800	800	3900	25		350	1600	600	1200	1100	1550
TS PHM 0810	800	1000	4200	40		350	1600	600	1200	1100	1750
TS PHM 1008	1000	800	5800	30	45-110	400	2100	1100	1500	1400	1850
TS PHM 1010	1000	1000	6300	50		400	2100	1100	1500	1400	2050
TS PHM 1012	1000	1200	6800	80		400	2100	1100	1500	1400	2250
TS PHM 1210	1200	1000	8200	50	90-160	500	2300	1300	1750	1700	2100
TS PHM 1212	1200	1200	8600	100		500	2300	1300	1750	1700	2300
TS PHM 1214	1200	1400	9000	135		500	2300	1300	1750	1700	2500
TS PHM 1412	1400	1200	9600	80	110-200	550	2400	1400	1850	1750	2500
TS PHM 1414	1400	1400	11,100	120		550	2400	1400	1850	1750	2700
TS PHM 1416	1400	1600	12,000	155		550	2400	1400	1850	1750	2900
TS PHM 1616	1600	1600	17,500	140	160-250	650	2700	1500	2200	2150	3000
TS PHM 1618	1600	1800	19,500	190		650	2700	1500	2200	2150	3200
TS PHM 1620	1600	2000	21,300	240		650	2700	1500	2200	2150	3400
TS PHM 1818	1800	1800	26,500	250	300-400	660	3300	1000	2650	2300	3800
TS PHM 1822	1800	2200	32,500	400		660	3300	1000	2650	2300	4200
TS PHM 1824	1800	2400	35,700	500		660	3300	1000	2650	2300	4400
TS PHM 1828	1800	2800	41,500	600	660	3300	1000	2650	2300	4800	
TS PHM 2 020	2000	2000	42,000	350	400-1200	750	3500	1350	2800	2950	4100
TS PHM 2 022	2000	2200	45,500	520		750	3500	1350	2800	2950	4300
TS PHM 2 024	2000	2400	48,800	650		750	3500	1350	2800	2950	4500
TS PHM 2 028	2000	2800	53,700	760		750	3500	1350	2800	2950	4900

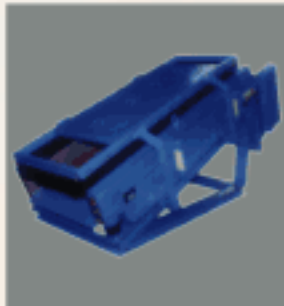


To enable our experienced engineering staff to recommend the installation best suited to specific applications, answers to as many of the following questions as possible will result in a prompt and accurate solution to your crushing requirements

- | | |
|-----------------------------------|--------------------------------------------|
| 1. Material to be crushed | 7. Product sizes required |
| 2. Maximum feed dimension | 8. Friability |
| 3. Approximate feed size analysis | 9. Abrasive characteristics |
| 4. Moisture content | 10. Do you intend close circuit operation? |
| 5. Stickiness | 11. Capacity desired in tons per hour |
| 6. Bulk Density | |

OUR TECHNICAL COLLABORATORS:

1. Single Roll Crushers, Double Roll Crushers, (Smooth & Toothed), Reversible Impact Mill, Impact Hammer Crushers, Roller Screen, Ball Mills in technical collaboration with M/s. FAM Magdeburger Förderanlagen und Baumaschinen GmbH, Germany.
2. Aggregate Crushing and Screening plants - Cone Crushers, Vertical Shaft Impactors (Zenturbo), Jaw Crushers, in technical collaboration with M/s. Maschinenfabrik Liezen Und Giesserei Ges.m.b.H.
3. Flip-flow Screens in technical collaboration with M/s. Hein, Lehmann Trenn- Und Fordertechnik GmbH.
4. Vibrating Screens (Circular and linear motion), Vibrating Feeders, Apron Feeders in technical collaboration with M/s PEYTEC Aschauer & Peyfuss OEG, AUSTRIA.
5. Turnkey Projects - Fuel and Ash handling systems for Coal, Biomass, Bagasse based power plants, Material handling system for steel, cement, paper, industry etc.



Send your enquiries to :

TECPRO SYSTEMS (P) LIMITED

Product Division, Unit 2, First Floor, 25, Gandhinagar First Main Road, Adyar, Chennai 600 020. Ph : +91 44 42076559, 24426027, 24425886
 Fax : + 91 44 24425922 Email : tecprochn@vsnl.net

Kolkata
 77 A, Raja Basanta Roy Road
 2nd Floor, Kolkata 700 029
 Ph : +91 33 2464 9150/9156
 Fax: +91 33 2464 7398
 Email: tecprocal@vsnl.net

New Delhi
 114-115, Vishwadeep Towers, District Centre,
 Jangpore, New Delhi 110 058.
 Ph : +91 11 25540950 / 54 / 59
 Fax : +91 11 25540951
 e-mail : tecprodel@tecprosystems.com

Dubai
 M/s. Avigo Fzco
 Suite 410, LOB 15,
 PO Box 18264, Jebel Ali, Dubai, UAE
 Ph : +971 4881 4681
 Fax : +971 4887 1297
 Email: ata@avigo.com